

Acta Crystallographica Section E

## Structure Reports

Online

ISSN 1600-5368

4-Bromo-*N*-phenylbenzamideHoong-Kun Fun,<sup>a,\*</sup>† Suchada Chantrapromma,<sup>b,§</sup>  
Weerawat Sripet,<sup>b</sup> Pumsak Ruanwas<sup>b</sup> and Nawong  
Boonnak<sup>b</sup><sup>a</sup>X-ray Crystallography Unit, School of Physics, Universiti Sains Malaysia, 11800 USM, Penang, Malaysia, and <sup>b</sup>Crystal Materials Research Unit, Department of Chemistry, Faculty of Science, Prince of Songkla University, Hat-Yai, Songkhla 90112, Thailand

Correspondence e-mail: hkfun@usm.my

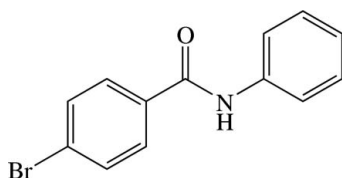
Received 20 March 2012; accepted 28 March 2012

Key indicators: single-crystal X-ray study;  $T = 100$  K; mean  $\sigma(\text{C}-\text{C}) = 0.003$  Å;  $R$  factor = 0.032;  $wR$  factor = 0.076; data-to-parameter ratio = 25.8.

The molecule of the title benzamide derivative,  $\text{C}_{13}\text{H}_{10}\text{BrNO}$ , is twisted with the dihedral angle between the phenyl and 4-bromophenyl rings being  $58.63(9)^\circ$ . The central  $\text{N}-\text{C}=\text{O}$  plane makes dihedral angles of  $30.2(2)$  and  $29.2(2)^\circ$  with the phenyl and 4-bromophenyl rings, respectively. In the crystal, molecules are linked by  $\text{N}-\text{H}\cdots\text{O}$  hydrogen bonds into chains along  $[100]$ .  $\text{C}-\text{H}\cdots\pi$  contacts combine with the  $\text{N}-\text{H}\cdots\text{O}$  hydrogen bonds, to form a three-dimensional network.

## Related literature

For bond-length data, see: Allen *et al.* (1987). For related structures, see: Johnston & Taylor (2011); Li & Cui (2011); Saeed *et al.* (2008); Sripet *et al.* (2012). For background to and applications of benzamide derivatives, see: Boonleang & Tanthana (2010); Brown *et al.* (1991); Hu *et al.* (2008); Mobinikhaledi *et al.* (2006); Olsson *et al.* (2002); World Health Organization (2003); Xu *et al.* (2009). For the stability of the temperature controller used in the data collection, see: Cosier & Glazer (1986).



## Experimental

## Crystal data

 $\text{C}_{13}\text{H}_{10}\text{BrNO}$  $M_r = 276.12$ 

† Thomson Reuters ResearcherID: A-3561-2009.

§ Thomson Reuters ResearcherID: A-5085-2009. Additional correspondence author, e-mail: suchada.c@psu.ac.th.

Triclinic,  $P\bar{1}$   
 $a = 5.3552(2)$  Å  
 $b = 7.6334(2)$  Å  
 $c = 13.9956(5)$  Å  
 $\alpha = 105.757(3)^\circ$   
 $\beta = 100.585(3)^\circ$   
 $\gamma = 90.086(2)^\circ$  $V = 540.45(3)$  Å<sup>3</sup>  
 $Z = 2$   
Mo  $K\alpha$  radiation  
 $\mu = 3.78$  mm<sup>-1</sup>  
 $T = 100$  K  
 $0.29 \times 0.09 \times 0.07$  mm

## Data collection

Bruker APEXII CCD area-detector diffractometer  
Absorption correction: multi-scan (*SADABS*; Bruker, 2005)  
 $T_{\min} = 0.406$ ,  $T_{\max} = 0.791$ 11303 measured reflections  
3844 independent reflections  
3193 reflections with  $I > 2\sigma(I)$   
 $R_{\text{int}} = 0.032$ 

## Refinement

 $R[F^2 > 2\sigma(F^2)] = 0.032$   
 $wR(F^2) = 0.076$   
 $S = 1.08$   
3844 reflections  
149 parametersH atoms treated by a mixture of independent and constrained refinement  
 $\Delta\rho_{\max} = 0.66$  e Å<sup>-3</sup>  
 $\Delta\rho_{\min} = -0.68$  e Å<sup>-3</sup>

Table 1

Hydrogen-bond geometry (Å, °).

 $\text{Cg1}$  and  $\text{Cg2}$  are the centroids of the  $\text{C1}-\text{C6}$  and  $\text{C8}-\text{C13}$  rings, respectively.

| $D-\text{H}\cdots A$                          | $D-\text{H}$ | $\text{H}\cdots A$ | $D\cdots A$ | $D-\text{H}\cdots A$ |
|---|--------------|--------------------|-------------|----------------------|
| $\text{N1}-\text{H1N1}\cdots\text{O1}^i$      | 0.84 (3)     | 2.37 (3)           | 3.150 (2)   | 156 (2)              |
| $\text{C2}-\text{H2A}\cdots\text{Cg2}^{ii}$   | 0.95         | 2.77               | 3.4855 (19) | 132                  |
| $\text{C5}-\text{H5A}\cdots\text{Cg2}^{iii}$  | 0.95         | 2.70               | 3.4258 (19) | 134                  |
| $\text{C10}-\text{H10A}\cdots\text{Cg1}^{iv}$ | 0.95         | 2.90               | 3.5444 (19) | 126                  |
| $\text{C13}-\text{H13A}\cdots\text{Cg1}^{v}$  | 0.95         | 2.84               | 3.4950 (19) | 127                  |

Symmetry codes: (i)  $x-1, y, z$ ; (ii)  $-x+2, -y, -z$ ; (iii)  $-x+1, -y+1, -z$ ; (iv)  $-x+1, -y, -z$ ; (v)  $-x+2, -y+1, -z$ .

Data collection: *APEX2* (Bruker, 2005); cell refinement: *SAINTE* (Bruker, 2005); data reduction: *SAINTE*; program(s) used to solve structure: *SHELXTL* (Sheldrick, 2008); program(s) used to refine structure: *SHELXTL*; molecular graphics: *SHELXTL*; software used to prepare material for publication: *SHELXTL* and *PLATON* (Spek, 2009).

The authors thank Prince of Songkla University for financial support through the Crystal Materials Research Unit. NB also thanks Prince of Songkla University for a postdoctoral fellowship. The authors also thank Universiti Sains Malaysia for the Research University Grant No. 1001/PFIZIK/811160.

Supplementary data and figures for this paper are available from the IUCr electronic archives (Reference: SJ5220).

## References

- Allen, F. H., Kennard, O., Watson, D. G., Brammer, L., Orpen, A. G. & Taylor, R. (1987). *J. Chem. Soc. Perkin Trans. 2*, pp. S1–19.  
Boonleang, J. & Tanthana, C. (2010). *Songklanakarinn J. Sci. Technol.* **32**, 605–611.  
Brown, J. M., Lemmon, M. J., Horsman, M. R. & Lee, W. W. (1991). *Int. J. Radiat. Biol.* **59**, 739–748.  
Bruker (2005). *APEX2*, *SAINTE* and *SADABS*. Bruker AXS Inc., Madison, Wisconsin, USA.  
Cosier, J. & Glazer, A. M. (1986). *J. Appl. Cryst.* **19**, 105–107.  
Hu, W.-P., Yu, H.-S., Chen, Y.-R., Tsai, Y.-M., Chen, Y.-K., Liao, C.-C., Chang, L.-S. & Wang, J.-J. (2008). *Bioorg. Med. Chem.* **16**, 5295–5302.  
Johnston, D. H. & Taylor, C. R. (2011). *Acta Cryst.* **E67**, o2735.

- Li, H.-L. & Cui, J.-T. (2011). *Acta Cryst.* **E67**, o1596.
- Mobinikhaledi, A., Forughifar, N., Shariatzadeh, S. M. & Fallah, M. (2006). *Heterocycl. Commun.* **12**, 427–430.
- Olsson, A. R., Lindgren, H., Pero, R. W. & Leanderson, T. (2002). *Br. J. Cancer*, **86**, 971–978.
- Saeed, A., Hussain, S. & Flörke, U. (2008). *Acta Cryst.* **E64**, o705.
- Sheldrick, G. M. (2008). *Acta Cryst.* **A64**, 112–122.
- Spek, A. L. (2009). *Acta Cryst.* **D65**, 148–155.
- Sripet, W., Chantrapromma, S., Ruanwas, P. & Fun, H.-K. (2012). *Acta Cryst.* **E68**, o1234.
- World Health Organization (2003). *Pharmaceuticals: Restriction in Use and Availability, Essential Drugs and Medicines Policy-Quality Assurance and Safety: Medicines Health Technology and Pharmaceuticals*. Geneva, Switzerland.
- Xu, J., Lecanu, L., Tan, M., Greeson, J. & Papadopoulos, V. (2009). *Molecules*, **14**, 3392–3410.

## supplementary materials

*Acta Cryst.* (2012). E68, o1269–o1270 [doi:10.1107/S1600536812013487]

## 4-Bromo-*N*-phenylbenzamide

Hoong-Kun Fun, Suchada Chantrapromma, Weerawat Sripet, Pumsak Ruanwas and Nawong Boonnak

### Comment

Benzamides are recognised as one of the bioactive skeletons, and some benzamide derivatives exhibit various potent pharmaceutical activities (Brown *et al.*, 1991; Hu *et al.*, 2008). They have been developed as anti-tumor (Olsson *et al.*, 2002), antibacterial (Mobinikhaledi *et al.*, 2006) and anti-Alzheimer's agents (Xu *et al.*, 2009). Cisapride (CIS) is an effective benzamide derived drug which can act as a gastrointestinal prokinetic agent. It also has restricted usage for the treatment of gastroesophageal reflux disease in some countries (World Health Organization, 2003) due to its cardiac side effects. The formulation of a more stable CIS oral suspension was studied (Boonleang & Tanthana, 2010). We have synthesized several *N*-phenylbenzamide derivatives in order to evaluate their antibacterial and anti-Alzheimer's activities, and the structure of the title benzamide derivative (I) is reported here.

The molecule of the title benzamide derivative (Fig. 1), C<sub>13</sub>H<sub>10</sub>BrNO, is twisted with the dihedral angle between the phenyl and 4-bromophenyl rings being 58.63 (9)°. The central N=C=O plane is twisted with respect to the two neighbouring ring planes forming dihedral angles of 30.2 (2) and 29.2 (2) ° with the phenyl and 4-bromophenyl rings respectively, and with torsion angles C2–C1–C7–O1 = -28.1 (3)° and C7–N1–C8–C13 = -30.2 (3)°. Bond distances are within normal ranges (Allen *et al.*, 1987) and are comparable to those found in related structures (Johnston & Taylor, 2011; Li & Cui, 2011; Saeed *et al.*, 2008; Sripet *et al.*, 2012).

In the crystal packing (Fig. 2), the molecules are linked by N—H···O hydrogen bonds (Table 1) into chains along the [100] direction. C—H···π contacts involving H atoms from both the phenyl and 4-bromophenyl rings combine with the N—H···O hydrogen bonds to form a 3-dimensional network (Table 1).

### Experimental

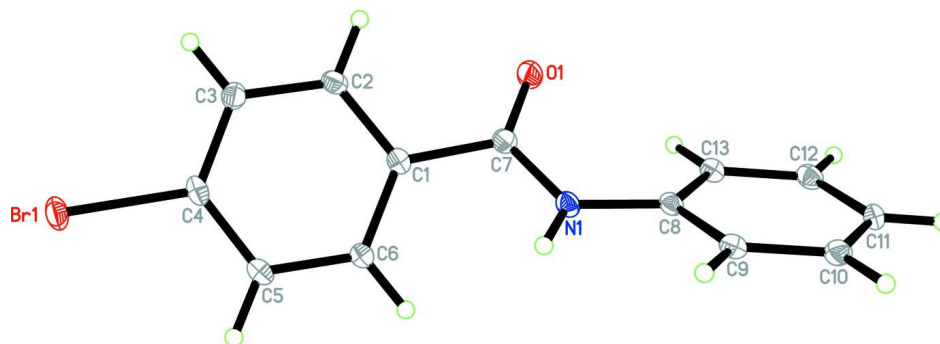
To the solution of 4-bromobenzoyl chloride (0.20 g, 0.91 mmol) in acetone (10 ml), aniline (0.12 ml, 1.37 mmol) was added and refluxed for 6 h. After the reaction was completed, a gray solid mass formed which was filtered and washed with distilled water. Colorless needle-shaped single crystals of the title compound suitable for *X*-ray structure determination were recrystallized from acetone/CH<sub>3</sub>OH (1:1 v/v) by slow evaporation of the solvent at room temperature over a week, Mp. 474–475 K.

### Refinement

The amide H atom was located in a difference map and refined isotropically. The aromatic H atoms were positioned geometrically and allowed to ride on their parent atoms, with d(C–H) = 0.95 Å and the  $U_{iso}$  values were constrained to be 1.2 $U_{eq}$  of the carrier atom.

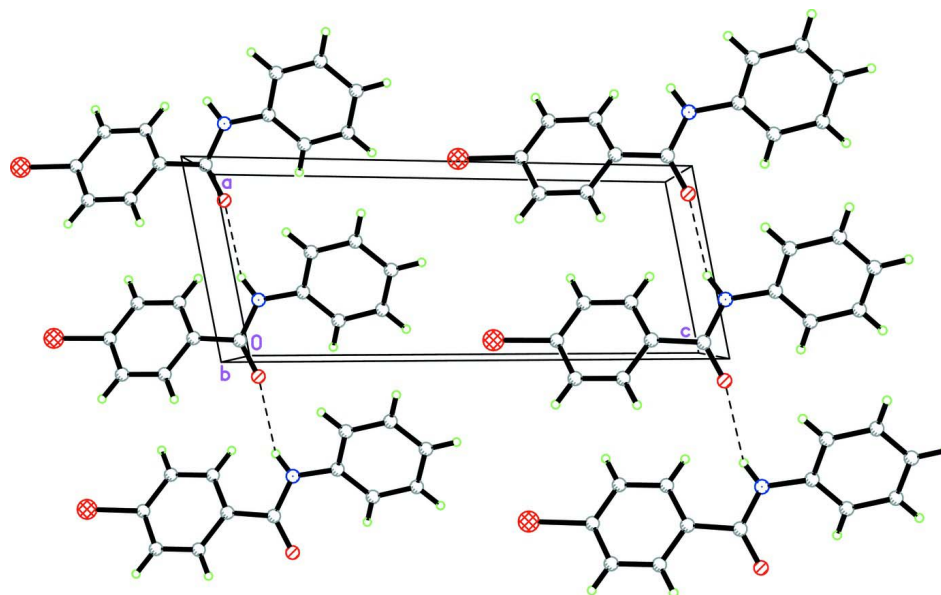
### Computing details

Data collection: *APEX2* (Bruker, 2005); cell refinement: *SAINT* (Bruker, 2005); data reduction: *SAINT* (Bruker, 2005); program(s) used to solve structure: *SHELXTL* (Sheldrick, 2008); program(s) used to refine structure: *SHELXTL* (Sheldrick, 2008); molecular graphics: *SHELXTL* (Sheldrick, 2008); software used to prepare material for publication: *SHELXTL* (Sheldrick, 2008) and *PLATON* (Spek, 2009).



**Figure 1**

The molecular structure of the title compound, showing 50% probability displacement ellipsoids and the atom-numbering scheme.



**Figure 2**

The crystal packing of the title compound viewed along the *b* axis, showing the molecular chains along the [100] direction. N—H...O hydrogen bonds were drawn as dashed lines.

### 4-Bromo-*N*-phenylbenzamide

#### Crystal data

$C_{13}H_{10}BrNO$

$M_r = 276.12$

Triclinic,  $P\bar{1}$

Hall symbol:  $-P\ 1$

$a = 5.3552(2)\ \text{\AA}$

$b = 7.6334(2)\ \text{\AA}$

$c = 13.9956(5)\ \text{\AA}$

$\alpha = 105.757(3)^\circ$

$\beta = 100.585 (3)^\circ$   
 $\gamma = 90.086 (2)^\circ$   
 $V = 540.45 (3) \text{ \AA}^3$   
 $Z = 2$   
 $F(000) = 276$   
 $D_x = 1.697 \text{ Mg m}^{-3}$   
 Melting point = 474–475 K

Mo  $K\alpha$  radiation,  $\lambda = 0.71073 \text{ \AA}$   
 Cell parameters from 3844 reflections  
 $\theta = 2.8\text{--}32.5^\circ$   
 $\mu = 3.78 \text{ mm}^{-1}$   
 $T = 100 \text{ K}$   
 Needle, colorless  
 $0.29 \times 0.09 \times 0.07 \text{ mm}$

*Data collection*

Bruker APEXII CCD area-detector  
 diffractometer  
 Radiation source: sealed tube  
 Graphite monochromator  
 $\varphi$  and  $\omega$  scans  
 Absorption correction: multi-scan  
 (SADABS; Bruker, 2005)  
 $T_{\min} = 0.406$ ,  $T_{\max} = 0.791$

11303 measured reflections  
 3844 independent reflections  
 3193 reflections with  $I > 2\sigma(I)$   
 $R_{\text{int}} = 0.032$   
 $\theta_{\max} = 32.5^\circ$ ,  $\theta_{\min} = 2.8^\circ$   
 $h = -7 \rightarrow 8$   
 $k = -11 \rightarrow 11$   
 $l = -21 \rightarrow 21$

*Refinement*

Refinement on  $F^2$   
 Least-squares matrix: full  
 $R[F^2 > 2\sigma(F^2)] = 0.032$   
 $wR(F^2) = 0.076$   
 $S = 1.08$   
 3844 reflections  
 149 parameters  
 0 restraints  
 Primary atom site location: structure-invariant  
 direct methods

Secondary atom site location: difference Fourier  
 map  
 Hydrogen site location: inferred from  
 neighbouring sites  
 H atoms treated by a mixture of independent  
 and constrained refinement  
 $w = 1/[\sigma^2(F_o^2) + (0.0335P)^2 + 0.2642P]$   
 where  $P = (F_o^2 + 2F_c^2)/3$   
 $(\Delta/\sigma)_{\max} = 0.001$   
 $\Delta\rho_{\max} = 0.66 \text{ e \AA}^{-3}$   
 $\Delta\rho_{\min} = -0.68 \text{ e \AA}^{-3}$

*Special details*

**Experimental.** The crystal was placed in the cold stream of an Oxford Cryosystems Cobra open-flow nitrogen cryostat (Cosier & Glazer, 1986) operating at 120.0 (1) K.

**Geometry.** All esds (except the esd in the dihedral angle between two l.s. planes) are estimated using the full covariance matrix. The cell esds are taken into account individually in the estimation of esds in distances, angles and torsion angles; correlations between esds in cell parameters are only used when they are defined by crystal symmetry. An approximate (isotropic) treatment of cell esds is used for estimating esds involving l.s. planes.

**Refinement.** Refinement of  $F^2$  against ALL reflections. The weighted R-factor  $wR$  and goodness of fit  $S$  are based on  $F^2$ , conventional R-factors  $R$  are based on  $F$ , with  $F$  set to zero for negative  $F^2$ . The threshold expression of  $F^2 > 2\sigma(F^2)$  is used only for calculating R-factors(gt) etc. and is not relevant to the choice of reflections for refinement. R-factors based on  $F^2$  are statistically about twice as large as those based on  $F$ , and R-factors based on ALL data will be even larger.

*Fractional atomic coordinates and isotropic or equivalent isotropic displacement parameters ( $\text{\AA}^2$ )*

|      | <i>x</i>    | <i>y</i>    | <i>z</i>      | $U_{\text{iso}}^*/U_{\text{eq}}$ |
|------|-------------|-------------|---------------|----------------------------------|
| Br1  | 0.91443 (4) | 0.72493 (3) | 0.467544 (14) | 0.01790 (7)                      |
| O1   | 1.1259 (3)  | 0.2407 (2)  | 0.00304 (11)  | 0.0175 (3)                       |
| N1   | 0.6913 (3)  | 0.2128 (2)  | -0.03111 (12) | 0.0119 (3)                       |
| H1N1 | 0.564 (5)   | 0.226 (4)   | -0.003 (2)    | 0.020 (6)*                       |
| C1   | 0.9088 (4)  | 0.3807 (2)  | 0.13585 (13)  | 0.0112 (3)                       |
| C2   | 1.1145 (4)  | 0.3763 (2)  | 0.21293 (14)  | 0.0126 (3)                       |
| H2A  | 1.2533      | 0.3037      | 0.1972        | 0.015*                           |

|      |            |             |               |            |
|------|------------|-------------|---------------|------------|
| C3   | 1.1178 (4) | 0.4768 (2)  | 0.31221 (14)  | 0.0134 (3) |
| H3A  | 1.2565     | 0.4728      | 0.3646        | 0.016*     |
| C4   | 0.9141 (4) | 0.5833 (2)  | 0.33308 (13)  | 0.0126 (3) |
| C5   | 0.7083 (4) | 0.5916 (2)  | 0.25806 (14)  | 0.0130 (3) |
| H5A  | 0.5720     | 0.6666      | 0.2739        | 0.016*     |
| C6   | 0.7057 (4) | 0.4879 (2)  | 0.15909 (13)  | 0.0119 (3) |
| H6A  | 0.5649     | 0.4902      | 0.1072        | 0.014*     |
| C7   | 0.9210 (4) | 0.2720 (2)  | 0.03006 (14)  | 0.0128 (3) |
| C8   | 0.6473 (4) | 0.1133 (2)  | -0.13458 (13) | 0.0112 (3) |
| C9   | 0.4262 (4) | 0.0002 (2)  | -0.17278 (14) | 0.0124 (3) |
| H9A  | 0.3161     | -0.0131     | -0.1289       | 0.015*     |
| C10  | 0.3667 (4) | -0.0932 (2) | -0.27495 (14) | 0.0138 (3) |
| H10A | 0.2160     | -0.1701     | -0.3005       | 0.017*     |
| C11  | 0.5252 (4) | -0.0749 (2) | -0.33980 (13) | 0.0138 (3) |
| H11A | 0.4832     | -0.1381     | -0.4097       | 0.017*     |
| C12  | 0.7467 (4) | 0.0368 (3)  | -0.30173 (14) | 0.0141 (3) |
| H12A | 0.8567     | 0.0487      | -0.3459       | 0.017*     |
| C13  | 0.8091 (4) | 0.1317 (2)  | -0.19935 (14) | 0.0125 (3) |
| H13A | 0.9603     | 0.2080      | -0.1740       | 0.015*     |

Atomic displacement parameters ( $\text{\AA}^2$ )

|     | $U^{11}$     | $U^{22}$    | $U^{33}$    | $U^{12}$    | $U^{13}$    | $U^{23}$    |
|-----|--------------|-------------|-------------|-------------|-------------|-------------|
| Br1 | 0.02581 (12) | 0.01545 (9) | 0.01116 (9) | 0.00385 (7) | 0.00550 (7) | 0.00021 (6) |
| O1  | 0.0126 (7)   | 0.0236 (7)  | 0.0141 (6)  | 0.0029 (6)  | 0.0038 (5)  | 0.0005 (5)  |
| N1  | 0.0110 (7)   | 0.0129 (7)  | 0.0117 (7)  | 0.0007 (6)  | 0.0045 (6)  | 0.0016 (5)  |
| C1  | 0.0114 (8)   | 0.0100 (7)  | 0.0121 (7)  | -0.0008 (6) | 0.0039 (6)  | 0.0020 (6)  |
| C2  | 0.0107 (8)   | 0.0118 (7)  | 0.0148 (8)  | 0.0018 (6)  | 0.0033 (6)  | 0.0021 (6)  |
| C3  | 0.0147 (9)   | 0.0133 (8)  | 0.0119 (8)  | 0.0007 (7)  | 0.0021 (6)  | 0.0033 (6)  |
| C4  | 0.0171 (9)   | 0.0097 (7)  | 0.0110 (7)  | -0.0002 (7) | 0.0057 (6)  | 0.0010 (6)  |
| C5  | 0.0142 (9)   | 0.0108 (7)  | 0.0148 (8)  | 0.0022 (7)  | 0.0063 (7)  | 0.0027 (6)  |
| C6  | 0.0125 (8)   | 0.0111 (7)  | 0.0116 (7)  | 0.0014 (6)  | 0.0026 (6)  | 0.0021 (6)  |
| C7  | 0.0136 (9)   | 0.0127 (8)  | 0.0121 (8)  | 0.0021 (7)  | 0.0029 (6)  | 0.0034 (6)  |
| C8  | 0.0135 (8)   | 0.0090 (7)  | 0.0115 (7)  | 0.0028 (6)  | 0.0031 (6)  | 0.0031 (6)  |
| C9  | 0.0115 (8)   | 0.0109 (7)  | 0.0154 (8)  | 0.0017 (6)  | 0.0042 (6)  | 0.0037 (6)  |
| C10 | 0.0116 (9)   | 0.0129 (8)  | 0.0159 (8)  | 0.0007 (7)  | 0.0019 (7)  | 0.0030 (6)  |
| C11 | 0.0148 (9)   | 0.0131 (8)  | 0.0109 (7)  | 0.0027 (7)  | 0.0015 (6)  | -0.0004 (6) |
| C12 | 0.0154 (9)   | 0.0148 (8)  | 0.0137 (8)  | 0.0037 (7)  | 0.0060 (7)  | 0.0045 (6)  |
| C13 | 0.0124 (9)   | 0.0116 (7)  | 0.0140 (8)  | 0.0015 (7)  | 0.0040 (6)  | 0.0033 (6)  |

Geometric parameters ( $\text{\AA}$ ,  $^\circ$ )

|         |             |          |           |
|---------|-------------|----------|-----------|
| Br1—C4  | 1.8985 (18) | C5—H5A   | 0.9500    |
| O1—C7   | 1.228 (2)   | C6—H6A   | 0.9500    |
| N1—C7   | 1.361 (2)   | C8—C9    | 1.395 (3) |
| N1—C8   | 1.417 (2)   | C8—C13   | 1.396 (3) |
| N1—H1N1 | 0.84 (3)    | C9—C10   | 1.390 (3) |
| C1—C6   | 1.395 (3)   | C9—H9A   | 0.9500    |
| C1—C2   | 1.401 (2)   | C10—C11  | 1.384 (3) |
| C1—C7   | 1.501 (2)   | C10—H10A | 0.9500    |

|              |              |                 |              |
|--------------|--------------|-----------------|--------------|
| C2—C3        | 1.390 (3)    | C11—C12         | 1.391 (3)    |
| C2—H2A       | 0.9500       | C11—H11A        | 0.9500       |
| C3—C4        | 1.388 (3)    | C12—C13         | 1.396 (3)    |
| C3—H3A       | 0.9500       | C12—H12A        | 0.9500       |
| C4—C5        | 1.390 (3)    | C13—H13A        | 0.9500       |
| C5—C6        | 1.394 (2)    |                 |              |
|              |              |                 |              |
| C7—N1—C8     | 126.73 (17)  | O1—C7—N1        | 123.92 (17)  |
| C7—N1—H1N1   | 116.5 (18)   | O1—C7—C1        | 121.13 (17)  |
| C8—N1—H1N1   | 116.4 (18)   | N1—C7—C1        | 114.94 (16)  |
| C6—C1—C2     | 119.54 (16)  | C9—C8—C13       | 119.69 (16)  |
| C6—C1—C7     | 122.67 (16)  | C9—C8—N1        | 117.73 (17)  |
| C2—C1—C7     | 117.76 (16)  | C13—C8—N1       | 122.50 (17)  |
| C3—C2—C1     | 120.71 (17)  | C10—C9—C8       | 120.15 (18)  |
| C3—C2—H2A    | 119.6        | C10—C9—H9A      | 119.9        |
| C1—C2—H2A    | 119.6        | C8—C9—H9A       | 119.9        |
| C4—C3—C2     | 118.53 (17)  | C11—C10—C9      | 120.53 (18)  |
| C4—C3—H3A    | 120.7        | C11—C10—H10A    | 119.7        |
| C2—C3—H3A    | 120.7        | C9—C10—H10A     | 119.7        |
| C3—C4—C5     | 122.06 (17)  | C10—C11—C12     | 119.40 (17)  |
| C3—C4—Br1    | 119.66 (14)  | C10—C11—H11A    | 120.3        |
| C5—C4—Br1    | 118.28 (14)  | C12—C11—H11A    | 120.3        |
| C4—C5—C6     | 118.79 (17)  | C11—C12—C13     | 120.79 (18)  |
| C4—C5—H5A    | 120.6        | C11—C12—H12A    | 119.6        |
| C6—C5—H5A    | 120.6        | C13—C12—H12A    | 119.6        |
| C5—C6—C1     | 120.35 (17)  | C8—C13—C12      | 119.43 (17)  |
| C5—C6—H6A    | 119.8        | C8—C13—H13A     | 120.3        |
| C1—C6—H6A    | 119.8        | C12—C13—H13A    | 120.3        |
|              |              |                 |              |
| C6—C1—C2—C3  | 0.2 (3)      | C2—C1—C7—O1     | -28.1 (3)    |
| C7—C1—C2—C3  | 178.64 (17)  | C6—C1—C7—N1     | -29.9 (3)    |
| C1—C2—C3—C4  | -0.7 (3)     | C2—C1—C7—N1     | 151.72 (17)  |
| C2—C3—C4—C5  | 0.1 (3)      | C7—N1—C8—C9     | 153.01 (18)  |
| C2—C3—C4—Br1 | -179.15 (14) | C7—N1—C8—C13    | -30.2 (3)    |
| C3—C4—C5—C6  | 0.8 (3)      | C13—C8—C9—C10   | -0.3 (3)     |
| Br1—C4—C5—C6 | -179.88 (14) | N1—C8—C9—C10    | 176.59 (16)  |
| C4—C5—C6—C1  | -1.3 (3)     | C8—C9—C10—C11   | -0.1 (3)     |
| C2—C1—C6—C5  | 0.7 (3)      | C9—C10—C11—C12  | 0.5 (3)      |
| C7—C1—C6—C5  | -177.57 (17) | C10—C11—C12—C13 | -0.6 (3)     |
| C8—N1—C7—O1  | -2.4 (3)     | C9—C8—C13—C12   | 0.2 (3)      |
| C8—N1—C7—C1  | 177.82 (16)  | N1—C8—C13—C12   | -176.50 (16) |
| C6—C1—C7—O1  | 150.22 (19)  | C11—C12—C13—C8  | 0.2 (3)      |

Hydrogen-bond geometry ( $\text{\AA}$ ,  $^\circ$ )

Cg1 and Cg2 are the centroids of the C1—C6 and C8—C13 rings, respectively.

| $D-H\cdots A$                    | $D-H$    | $H\cdots A$ | $D\cdots A$ | $D-H\cdots A$ |
|----------------------------------|----------|-------------|-------------|---------------|
| N1—H1N1 $\cdots$ O1 <sup>i</sup> | 0.84 (3) | 2.37 (3)    | 3.150 (2)   | 156 (2)       |
| C13—H13A $\cdots$ O1             | 0.95     | 2.42        | 2.923 (2)   | 113           |

---

|                              |      |      |             |     |
|------------------------------|------|------|-------------|-----|
| C2—H2A...Cg2 <sup>ii</sup>   | 0.95 | 2.77 | 3.4855 (19) | 132 |
| C5—H5A...Cg2 <sup>iii</sup>  | 0.95 | 2.70 | 3.4258 (19) | 134 |
| C10—H10A...Cg1 <sup>iv</sup> | 0.95 | 2.90 | 3.5444 (19) | 126 |
| C13—H13A...Cg1 <sup>v</sup>  | 0.95 | 2.84 | 3.4950 (19) | 127 |

---

Symmetry codes: (i)  $x-1, y, z$ ; (ii)  $-x+2, -y, -z$ ; (iii)  $-x+1, -y+1, -z$ ; (iv)  $-x+1, -y, -z$ ; (v)  $-x+2, -y+1, -z$ .